

Market Impact Studies

Users Guide

FXSTREET

Table of contents

Introduction

Study 1: Actual & Deviation History

What does this indicator tell me?

Why is this study important?

How to interpret the chart?

How is the Deviation calculated?

Study 2: True Range

What does this indicator tell me?

Why is this study important?

How to interpret the chart?

How are the indicators calculated?

Study 3: Volatility Ratio

What does this indicator tell me?

Why is this study important?

How to interpret the chart?

How are the indicators calculated?

Study 4: Deviation Impact

What does this indicator tell me?

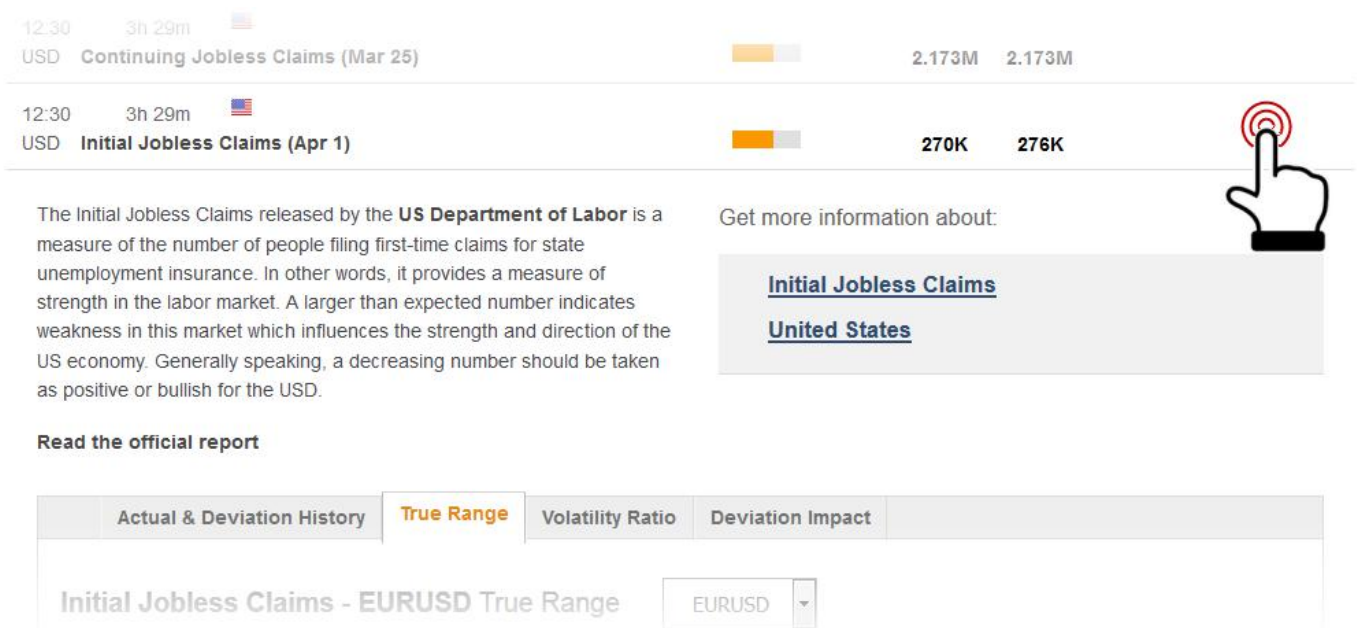
Why is this study important?

How to interpret the chart?

How are the indicators calculated?

Introduction

Which are the macro-economic indicators of **highest reactivity**? Which pairs are **mostly impacted by macro-economic data** releases? How can I assess **the risk and the reward** of trading an economic data release? These questions are addressed by the Market Impact Studies. You can see the Market Impact Studies by clicking on any of the released economic data on the Calendar:



Study 1: Actual & Deviation History

What does this indicator tell me?

The Actual & Deviation History chart tells you if an economic data **surprised the market in the past compared to its expectation** (consensus). A surprise generally generates a bigger impact (more price movement) in the markets.

This is also the place where to find time series of the particular economic event.

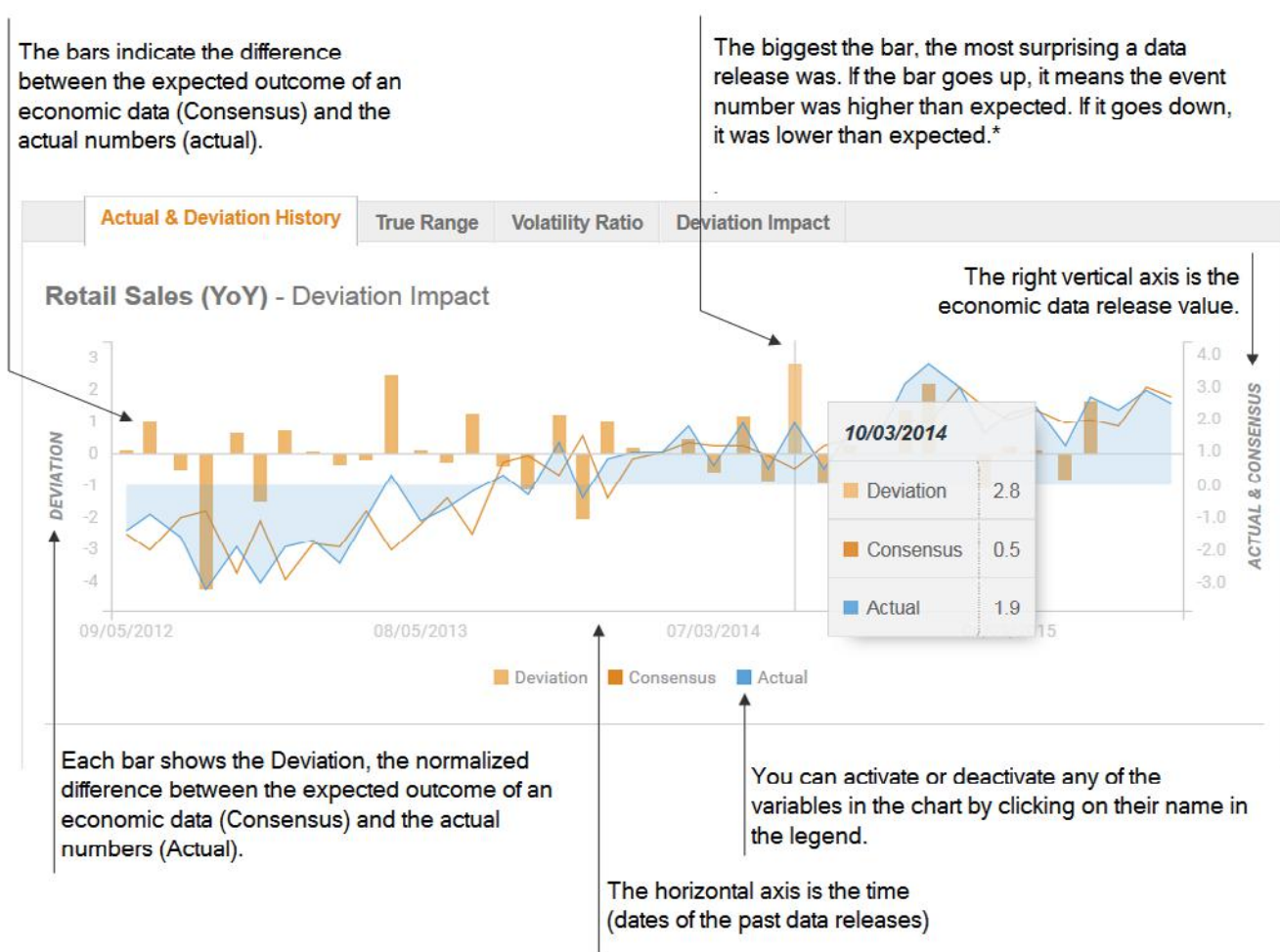
Why is this study important?

This is the information a very **short-term trader** needs to make an immediate buy/sell decision. Is the surprise big, the trader will be looking for big rewards, is the surprise small, the opportunity may not be attractive.

From a **risk management perspective**, a big surprise also leads to different actions than a small surprise. This assumes a weak market efficiency, ie that the forecasts are already included in the price and the actual readings above or below forecast influence the price.

For **non-scalping traders**, this study still provides useful information because it tells them if the market has overreacted to a large shock or underreacted to a small one, for instance. The only way to discover this is to compare the actual reaction to other reactions in the past for the same economical event.

How to interpret the chart?



Note: Lower or higher does not mean negative or positive. If we look at GDP numbers, a higher number is generally seen as more positive for an economy and by so, the strength of its currency. If we look at unemployment data, a lower number is positively interpreted as it shows the economy of the country is improving.

How is the Deviation calculated?

The Deviation is a proprietary indicator. It is the ratio between the difference of consensus and actual numbers, and the **standard deviation of this difference for the previous 5 events**.

Study 2: True Range

What does this indicator tell me?

The True Range chart shows the **volatility of a currency pair in terms of pip variation 15 minutes and 4 hours after** the data release. That may indicate what potential this data has to move the markets again in the future.

Why is this study important?

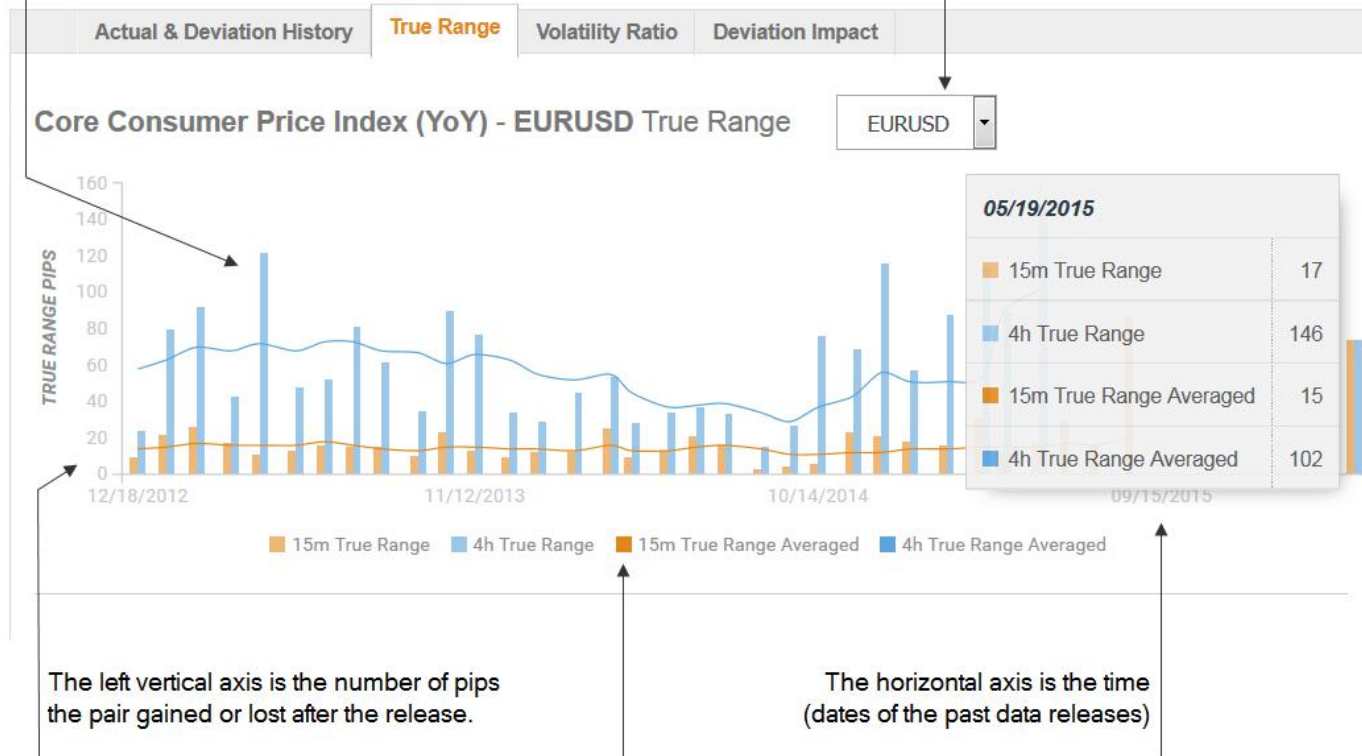
As a **news or event trader**, one needs to know what economic indicators represent an opportunity to trade. Economic calendars usually classify the releases with some sort of graphical distinction, but this method doesn't quantify the impact. Measuring the impact in effective terms will allow the trader to compare markets (pairs) and economic indicators and find the most market moving opportunities. This study can also contribute to assess the risk contained in a determined announcement and help the trader to anticipate the size of the move and to be prepared to sustain the ensuing volatility.



How to interpret the chart?

The bars indicate the volatility, in terms of True Range, of the currency pair 15 minutes and 4 hours after the economic data release. The higher the bar, the most volatile was the pair after the release. The lines show the 15 minutes and 4 hours True Range averaged.

You can select the currency pair using the dropdown list.



You can activate or deactivate any of the studies in the chart by clicking on their name in the legend.

How are the indicators calculated?

The True Range is the absolute value of the greatest of the following:

- ▶ Current High less Current Low
- ▶ Current High less Previous Close
- ▶ Current Low less Previous Close

The True Range Averaged is an average of the last 14 events True Range values.

Study 3: Volatility Ratio

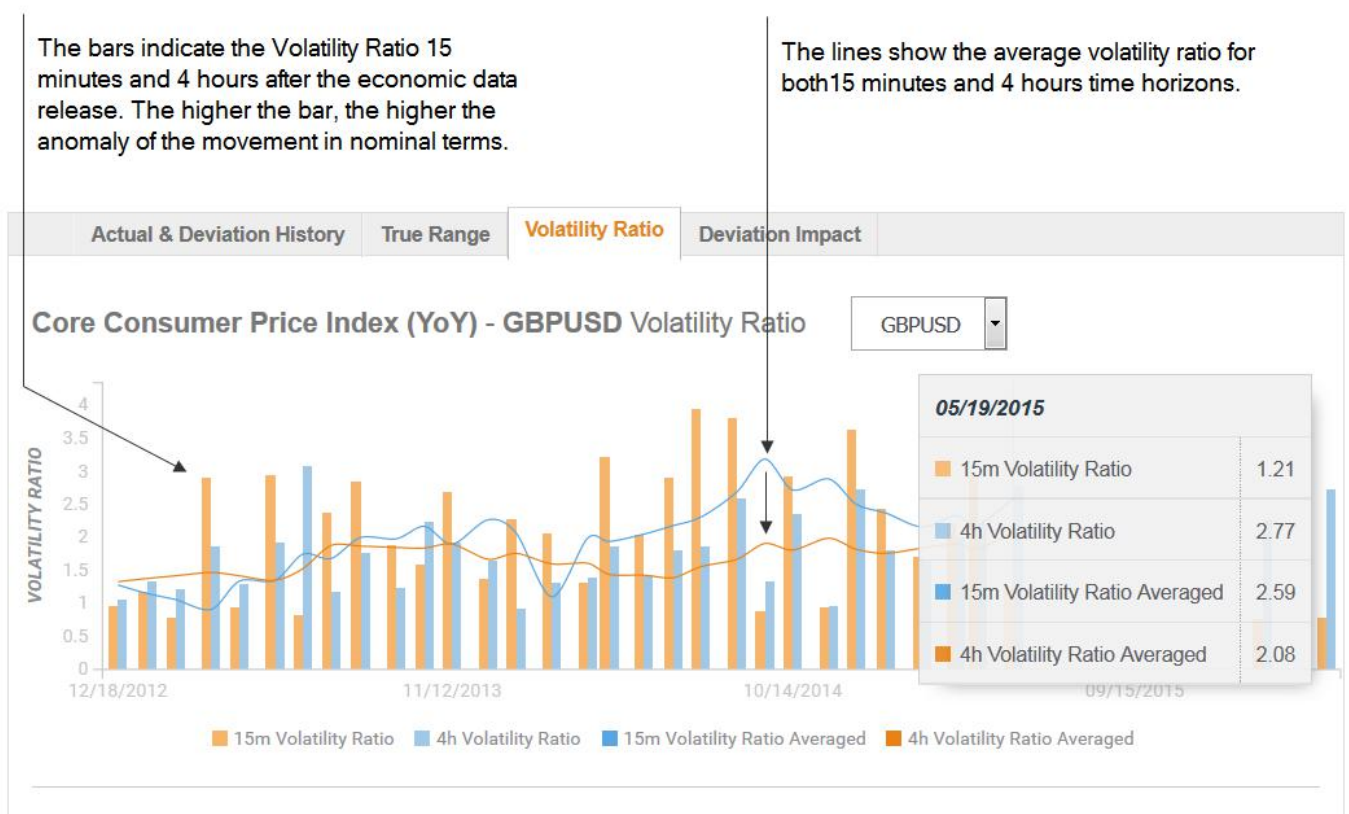
What does this indicator tell me?

This Volatility Ratio chart tells you if the **price movements** of a specific pair which were recorded in the aftermath of an economic release were **usual or exceptional**.

Why is this study important?

While the True Range in the previous study measures any price movement after an economic event, it is not capable to tell us if the follow-through price move was really an impact or just a normal market move. To find it out, we need to put the price reaction into the context of the recent price structure. The Volatility Ratio tells us **whether the size of the move is greater than the usual market volatility** displayed by a certain currency pair.

How to interpret the chart?



How are the indicators calculated?

The 15-minute Volatility Ratio is the 15-minute True Range divided by the 15 minute True Range Average of the last 14 events.

The 4-hour Volatility Ratio is the 4-hour True Range divided by the 4-hour True Range Average of the last 14 events.

Study 4: Deviation Impact

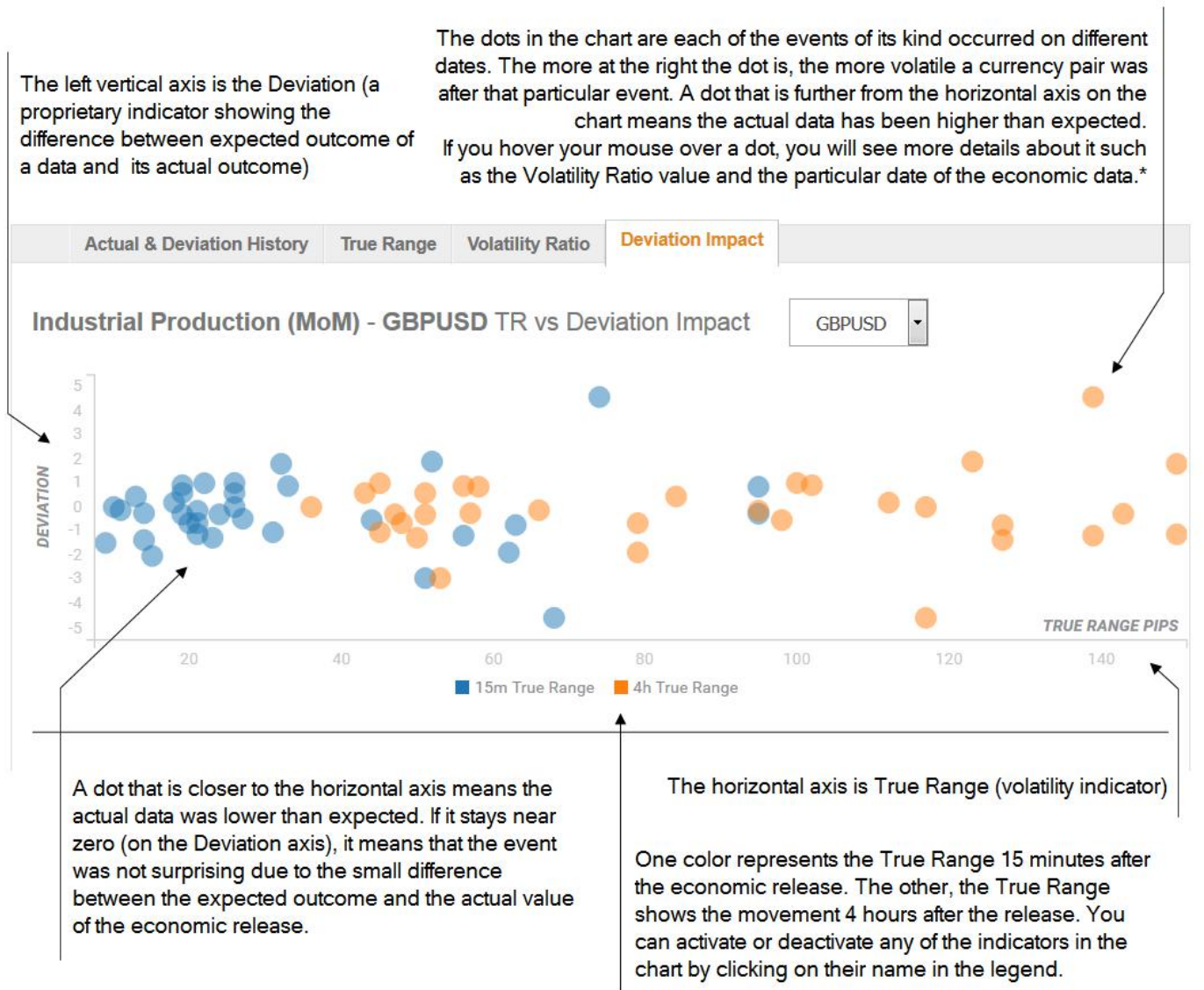
What does this indicator tell me?

This scatter plot chart relates the “Surprise factor”, i.e. the Deviation, with the True Range. It tells me **how volatile a currency pair can be once a specific data release hits** the markets.

Why is this study important?

This study can help traders deduce **how much a pair can move in the future** based on the deviation between the actual number and the expected number of an upcoming economic data release, i.e., how much of a deviation we must see in a certain event to have a trading opportunity. Choosing the right deviation trigger is the key to effective news trading. It can be also attractive for **binary traders/brokers, and options traders/brokers**.

How to interpret the chart?



Note: Lower or higher does not mean negative or positive. If we look at GDP numbers, for example, a higher number is generally seen as more positive for an economy and by so, the strength of its currency. If we look at unemployment data, a lower number is positively interpreted as it shows the economy of the country is improving.

How are the indicators calculated?

The Deviation is the ratio between the difference of the Consensus and Actual numbers, and the standard deviation of this difference for the previous 5 events.

The True Range being the absolute value of the greatest of the following:

- ▶ Current High less Current Low
- ▶ Current High less Previous Close
- ▶ Current Low less Previous Close

The 15-minute Volatility Ratio is the 15-minute True Range divided by the 15-minute True Range Average of the last 14 events.

The 4-hour Volatility Ratio is the 4-hour True Range divided by the 4-hour True Range Average of the last 14 events.

FOREXSTREET, S.L.

C/ Portaferriassa, 7 1r 2a

08002 Barcelona

Tel. +34 93 304 04 95

www.fxstreet.com

FXSTREET

Awards

FXStreet has received the following Awards:



"Best Education Service Provider for Trader" Award
Finance Magnates 2015



"Best Educational Tool" Award for the Learning Center
Finance Magnates 2014



"TraderPlanet's STAR Award" in Data category for the Economic Calendar
TraderPlanet 2013



Shortlisted as **"Best e-FX initiative of the year (vendor)"** for its News feed
FX Week e-FX Awards 2010